

BIM - Multiplatform approach at Doka



Bernhard Wieser
BIM Coordinator, Corporate Engineering, Doka HQ

Who is Doka



Doka – a company of Umdasch Group

- Formwork technology, shop fitting & innovation think tank under one roof



Doka Headquarters in Austria

- Research & Development, Production & Operations



The Doka Group – at a glance



Formwork systems

- Framed formwork for walls
Framax Xlife plus



Construction site

- Nant de Drance
Wallis, Switzerland



Construction site

- Cityringen
Kopenhagen, Denmark



Construction site

- MS-3 Ostróda
Ostróda, Poland



Construction site

- The Exchange 106 Tower
Kuala Lumpur, Malaysia



Doka The Formwork Experts

~ 60,000

Projects / year with

~ 23,000

Customers

about 4,500

Formwork items

> 40,000

Sample solutions

> 10

File formats for drawings and models

160

Branches worldwide

34

Document languages



actual requirements and BIM services at Doka



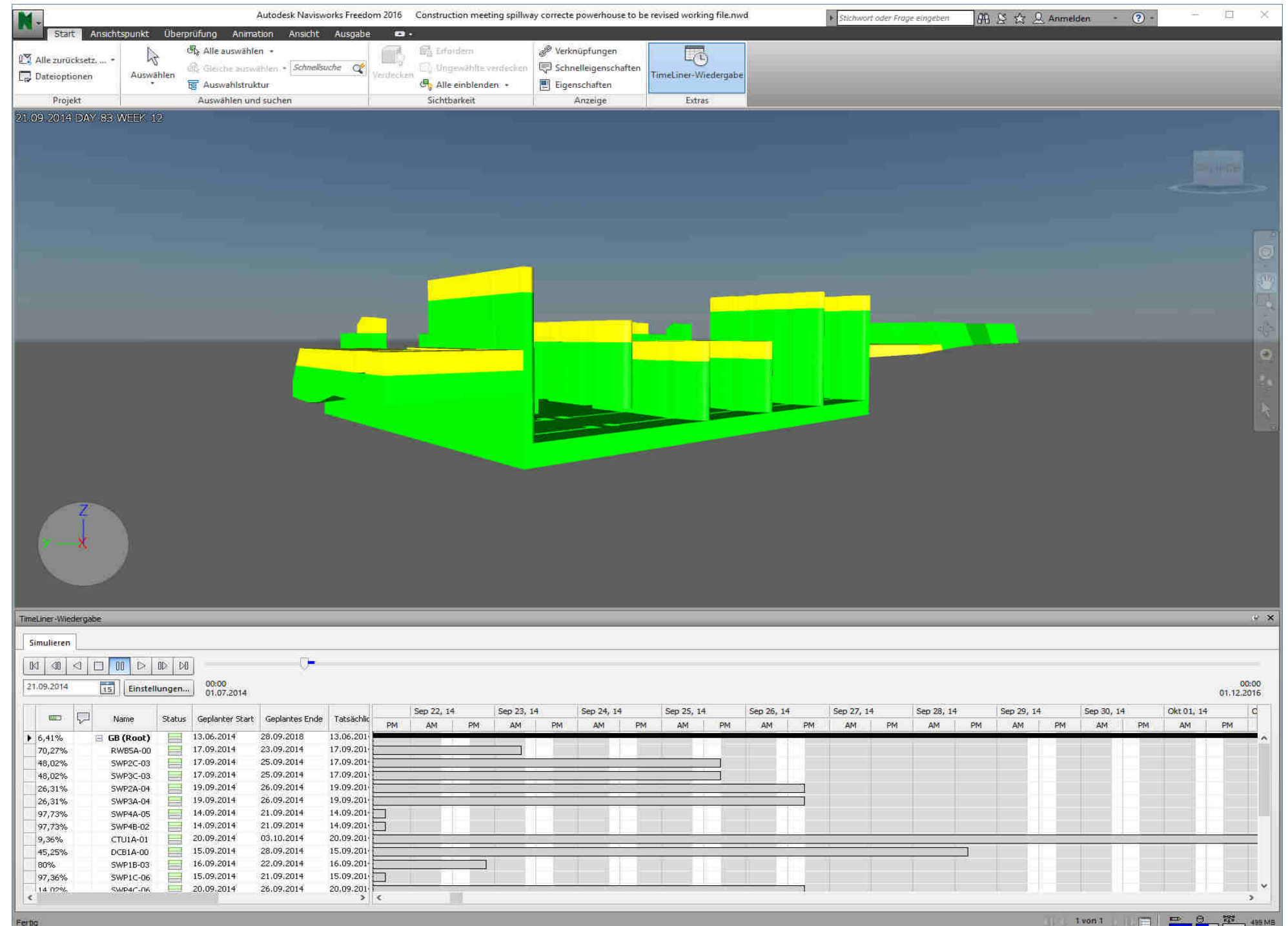
Construction site

- Muskrat Falls
Labrador, Canada



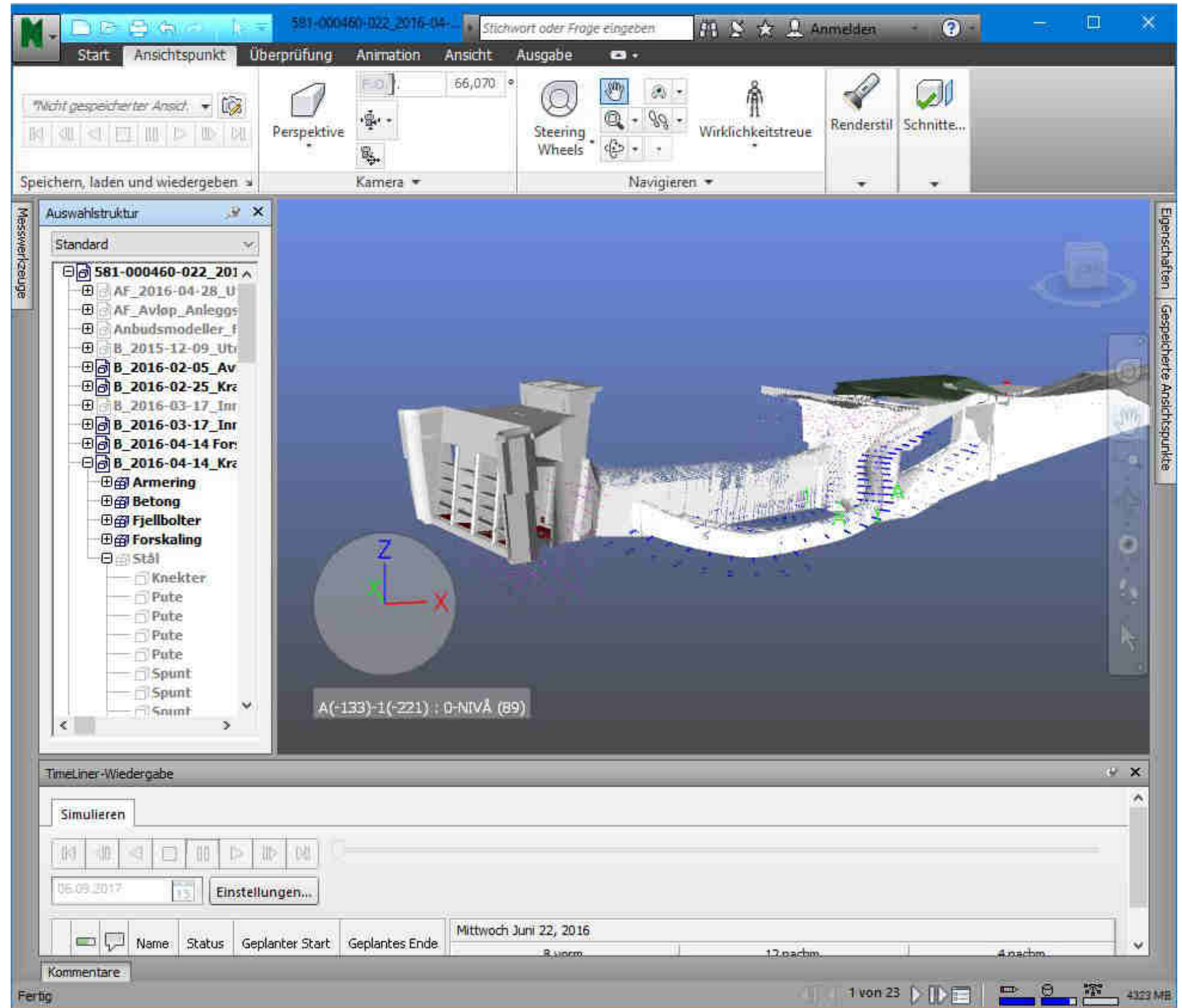
Construction site

- Muskrat Falls
Labrador, Canada
- model in Navisworks
(used in design phase,
not further maintained
in construction phase)



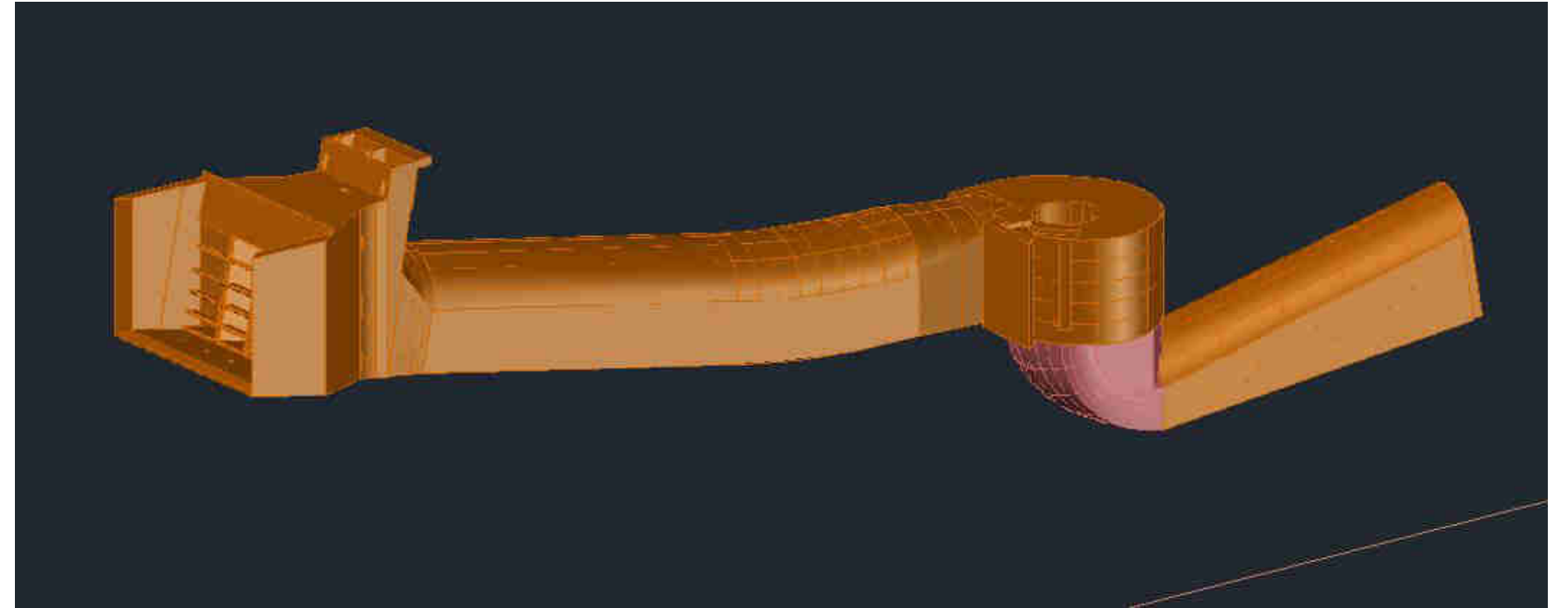
Construction site

- Vamma Hydroelectric Power Station, Norway
- model in Navisworks for visualization

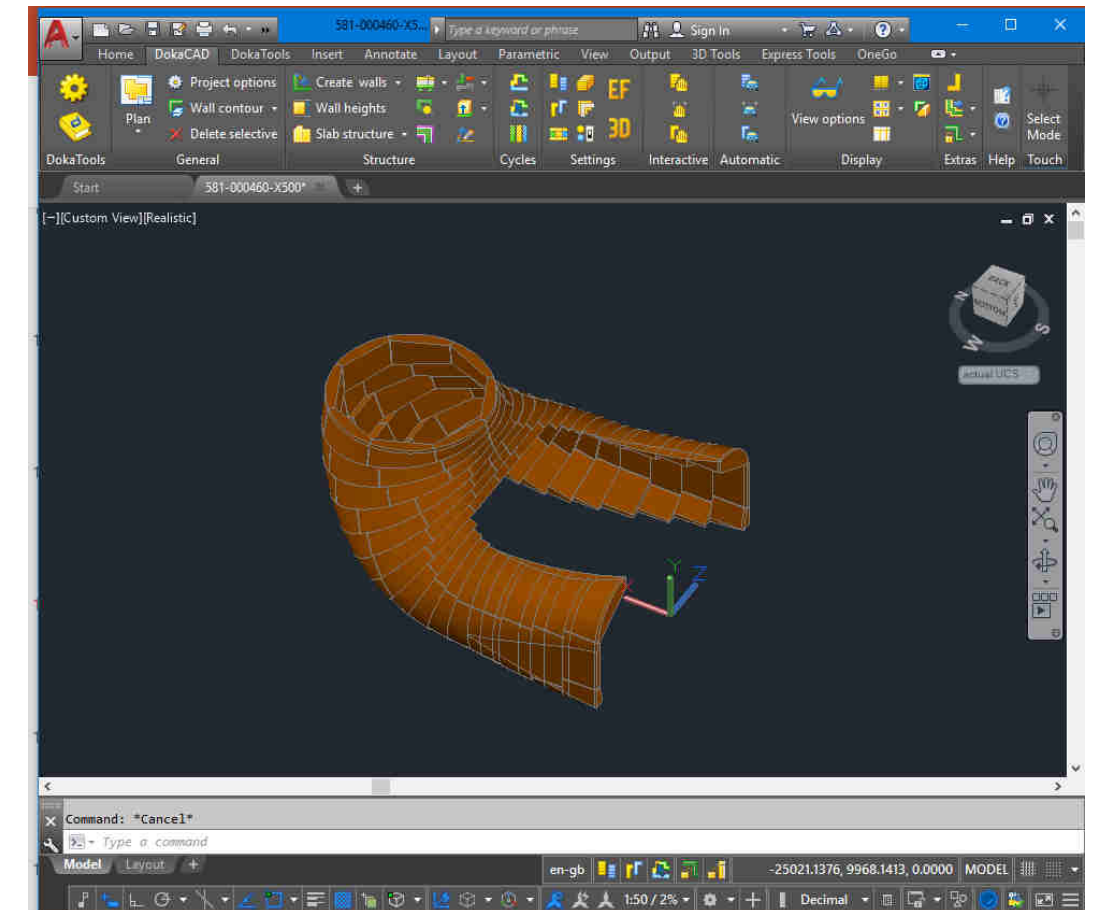
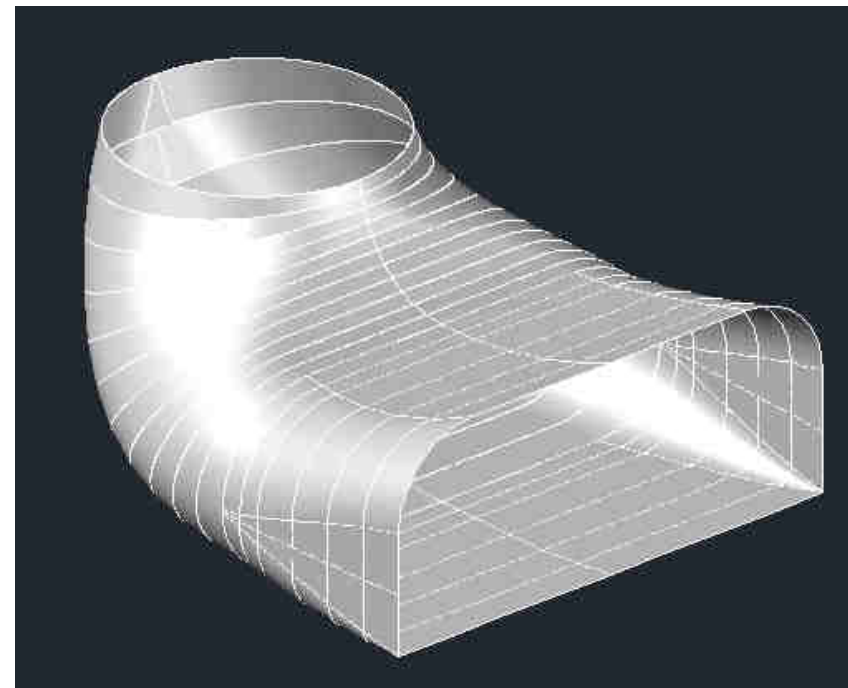
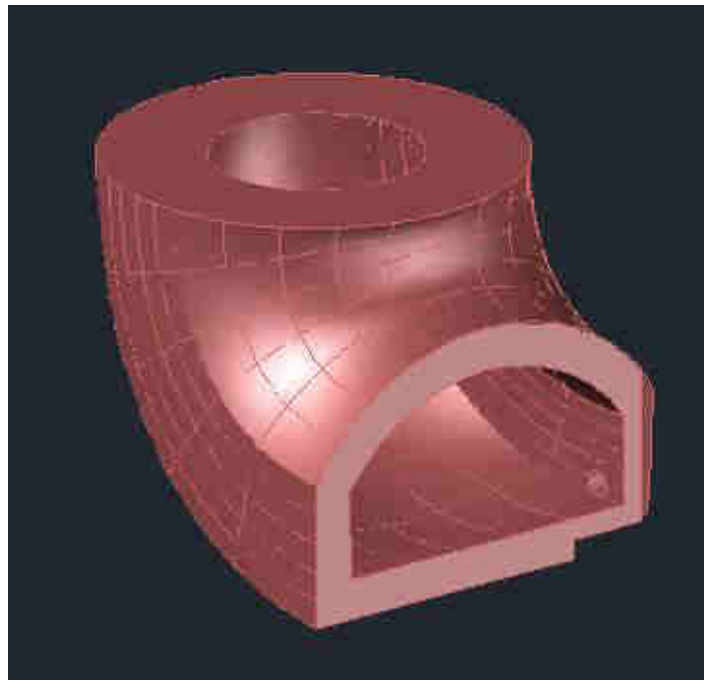


Construction site

- Vamma Hydroelectric Power Station, Norway

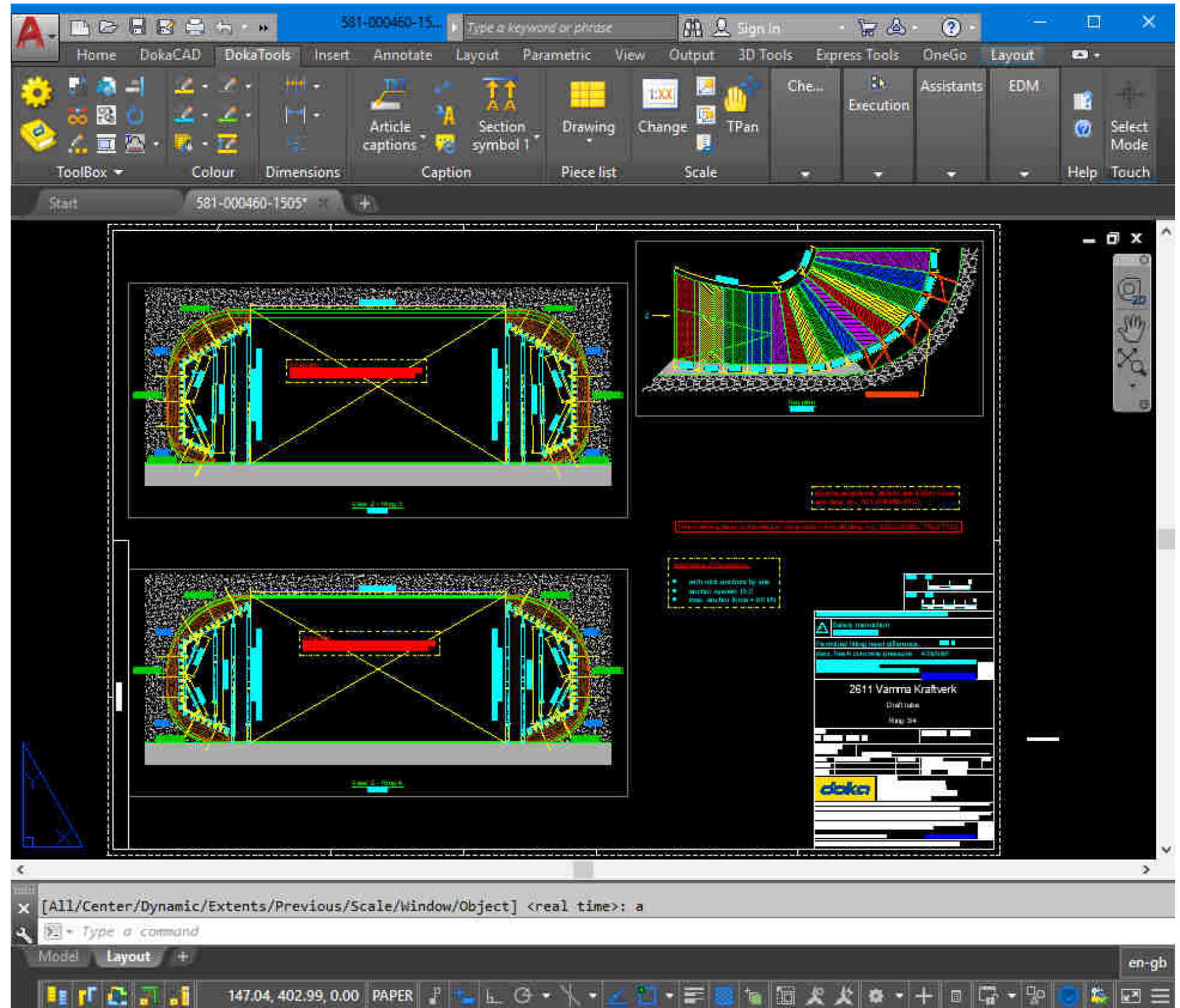


- from model to formwork (via *.sat data file)



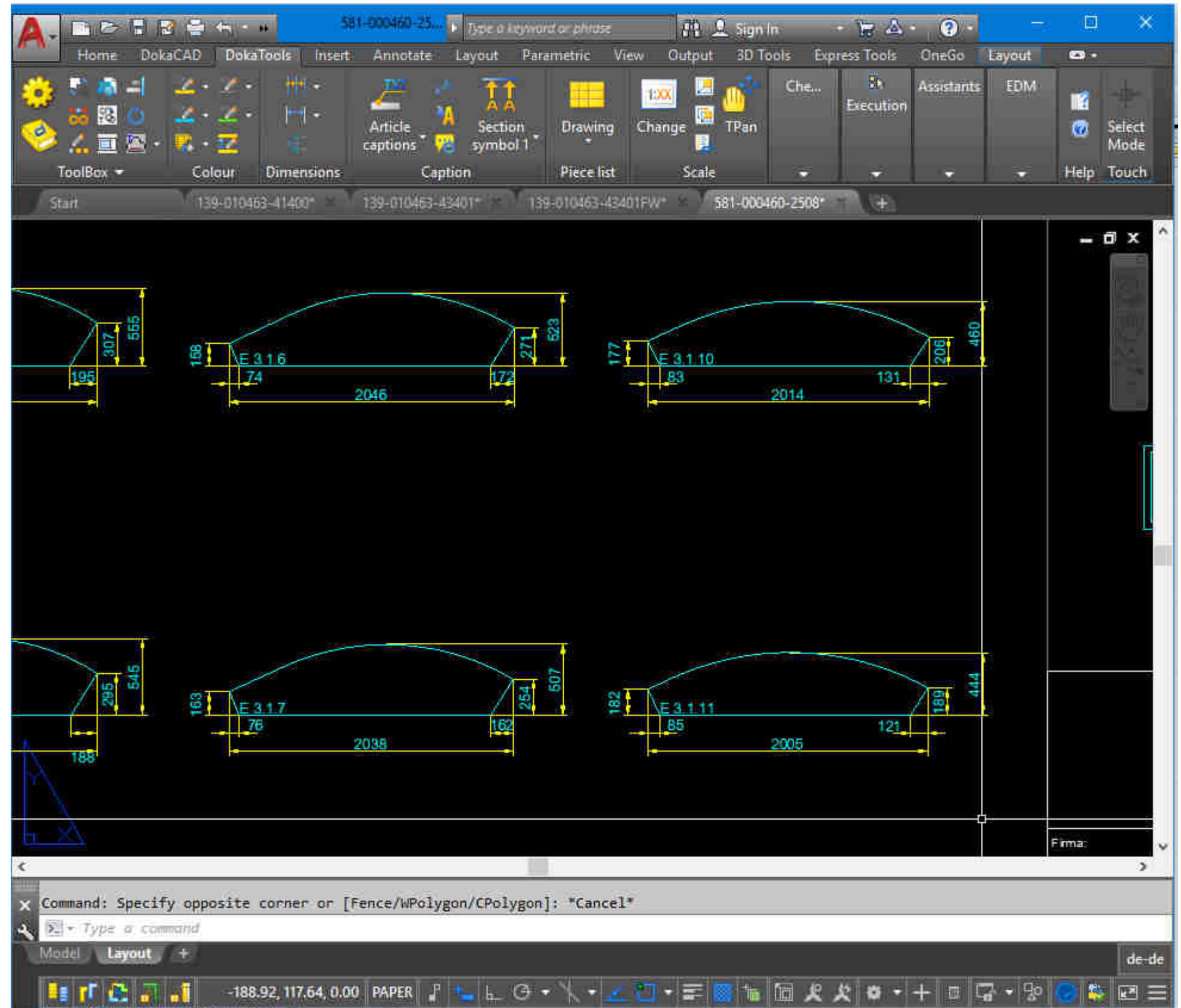
Construction site

- Vamma Hydroelectric Power Station, Norway
- from model to formwork



Construction site

- Vamma Hydroelectric Power Station, Norway
- from model to formwork, mainly manual formwork planning



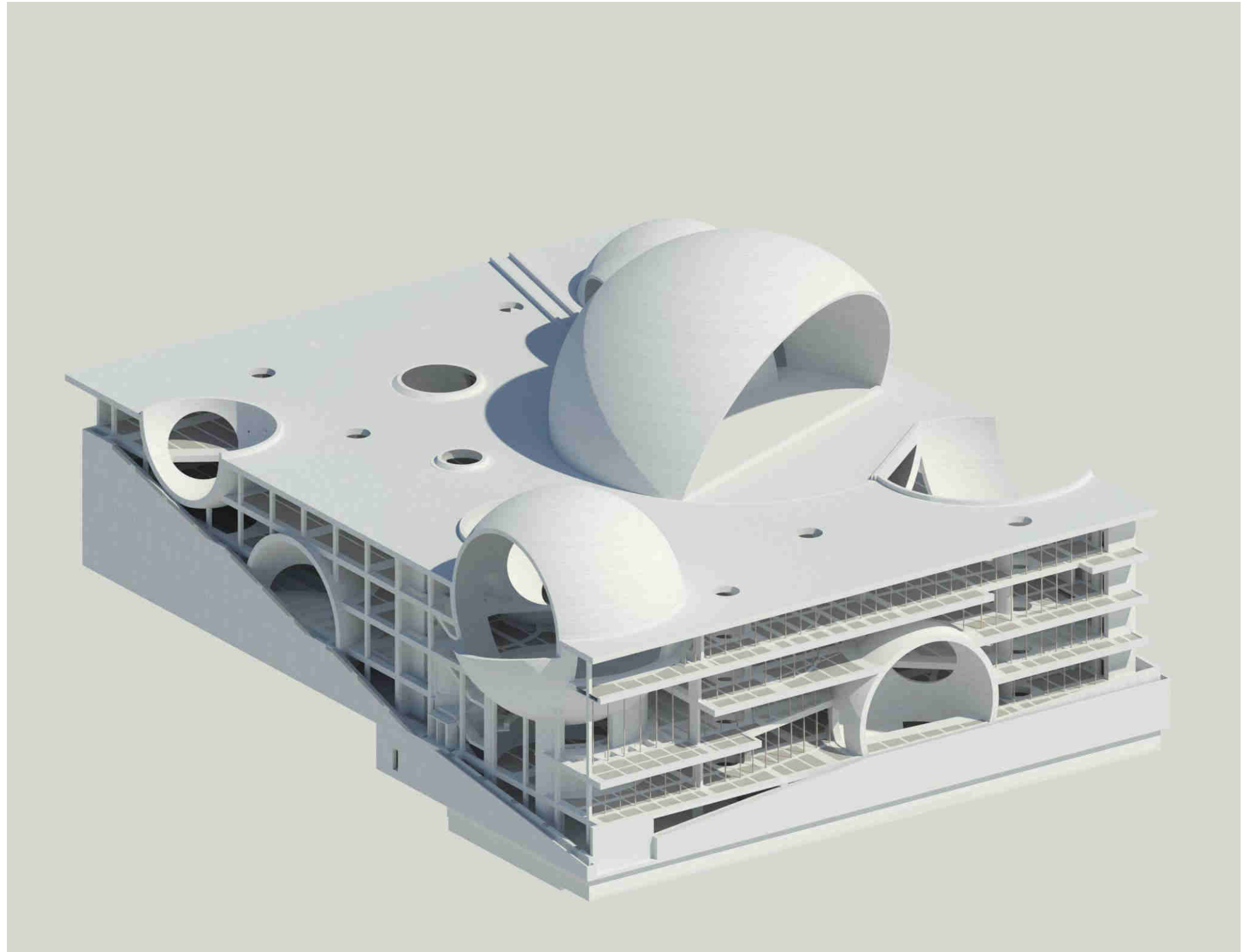
Construction site

- Vamma Hydroelectric Power Station, Norway
- assembly and use



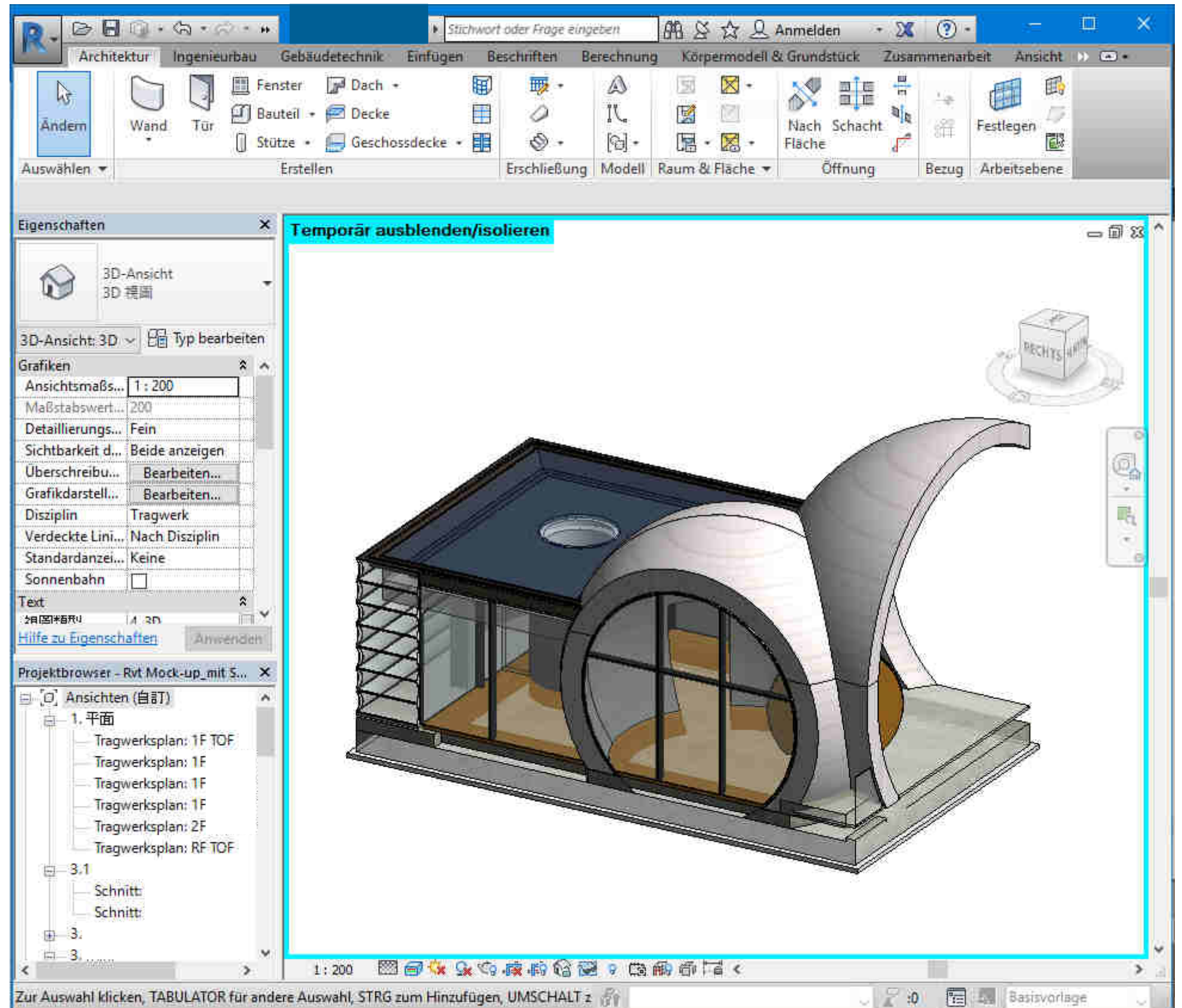
Construction site

- current project in Asia



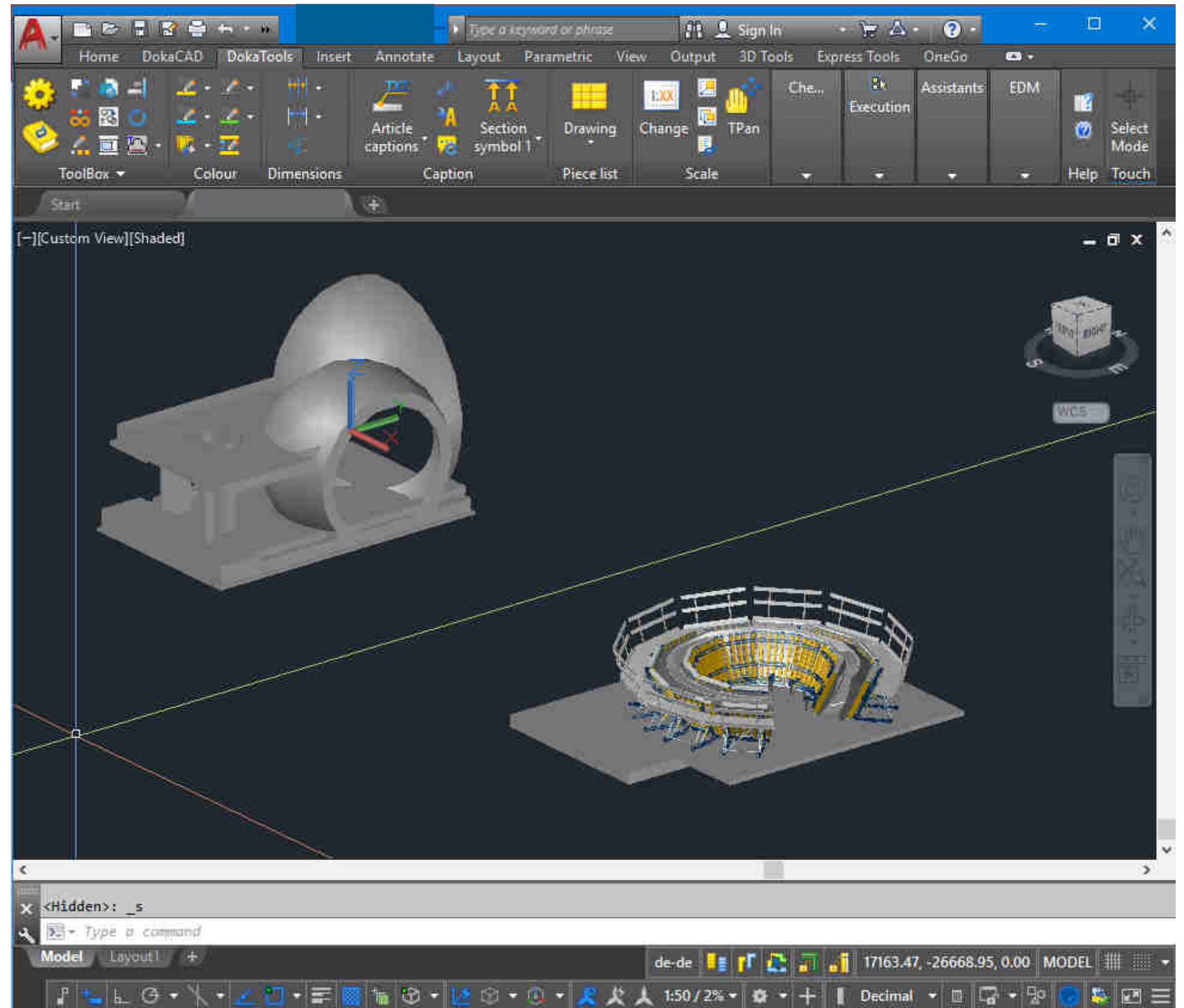
Construction site

- current project in Asia
- from model to formwork



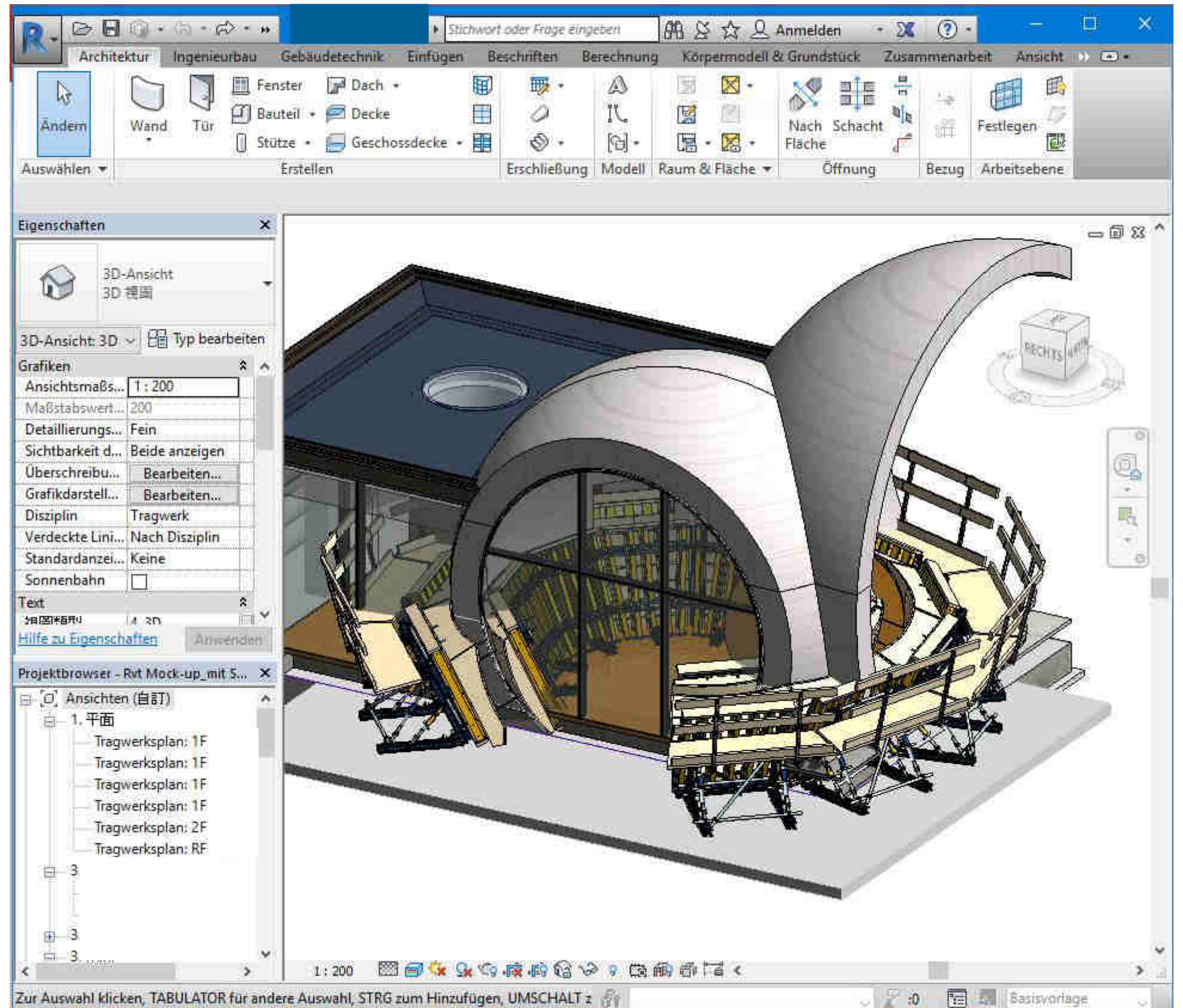
Construction site

- current project in Asia
- from model to formwork
(via *.dwg data file,
volume model)



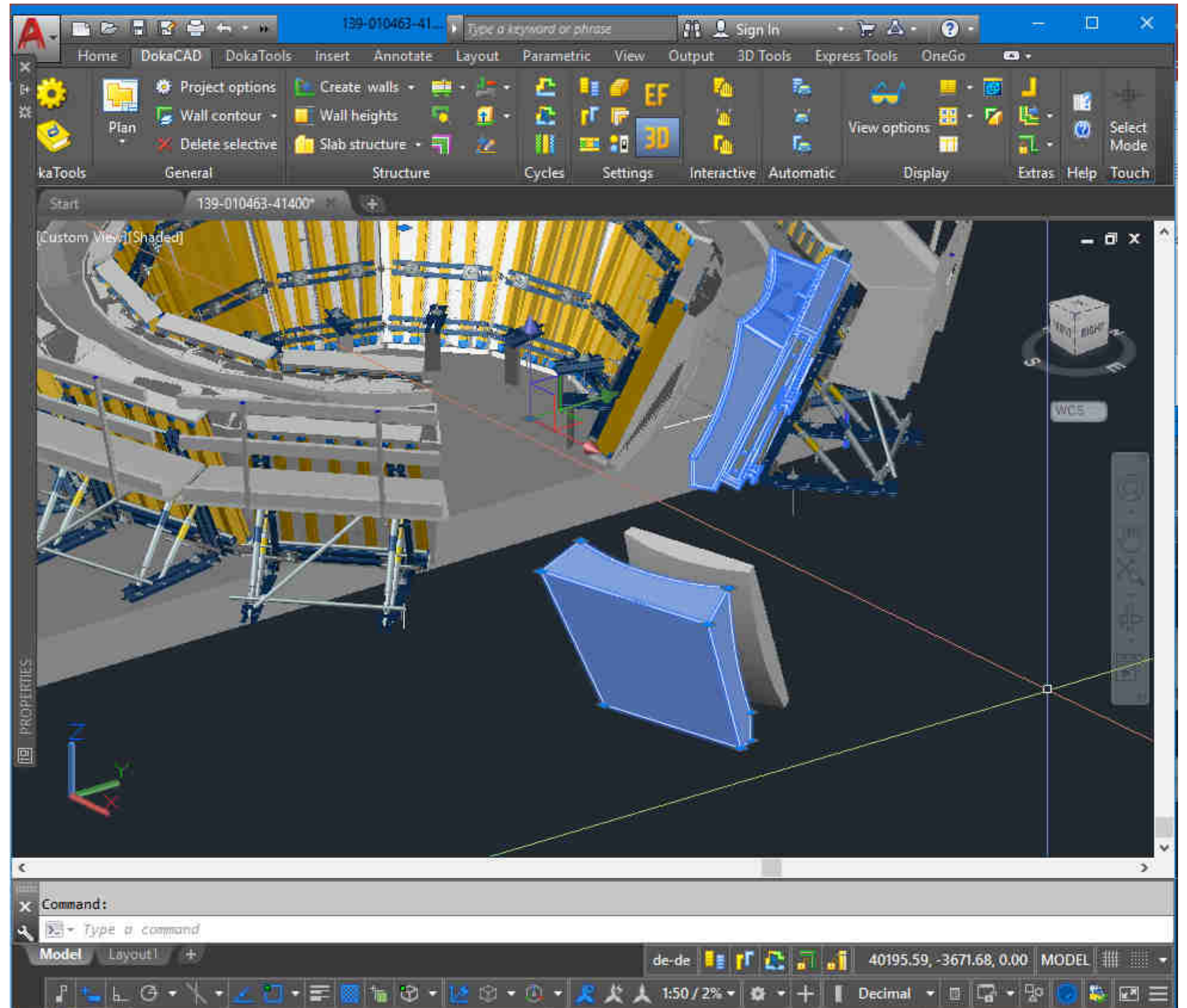
Construction site

- current project in Asia
- from model to formwork



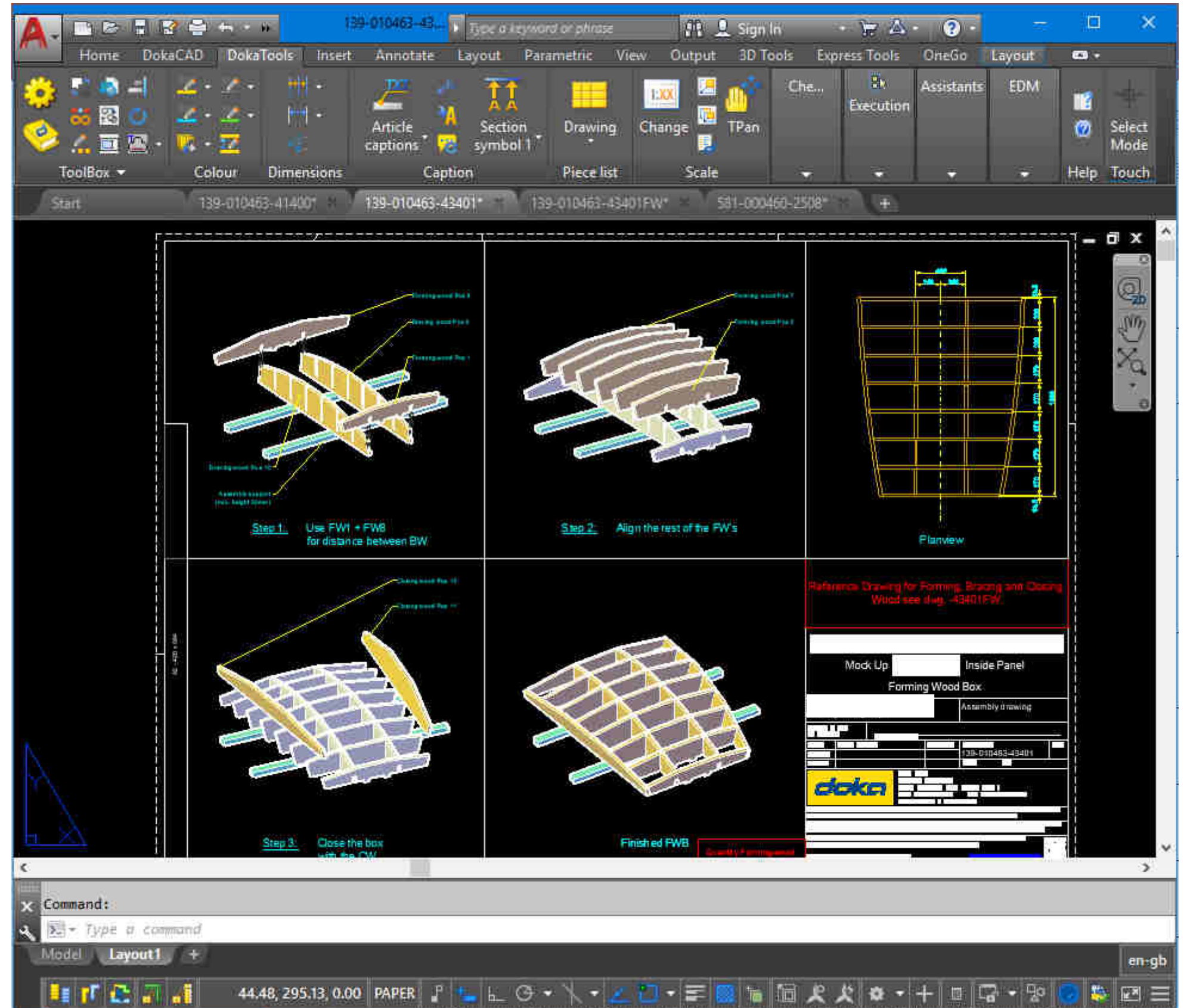
Construction site

- current project in Asia
- from model to formwork



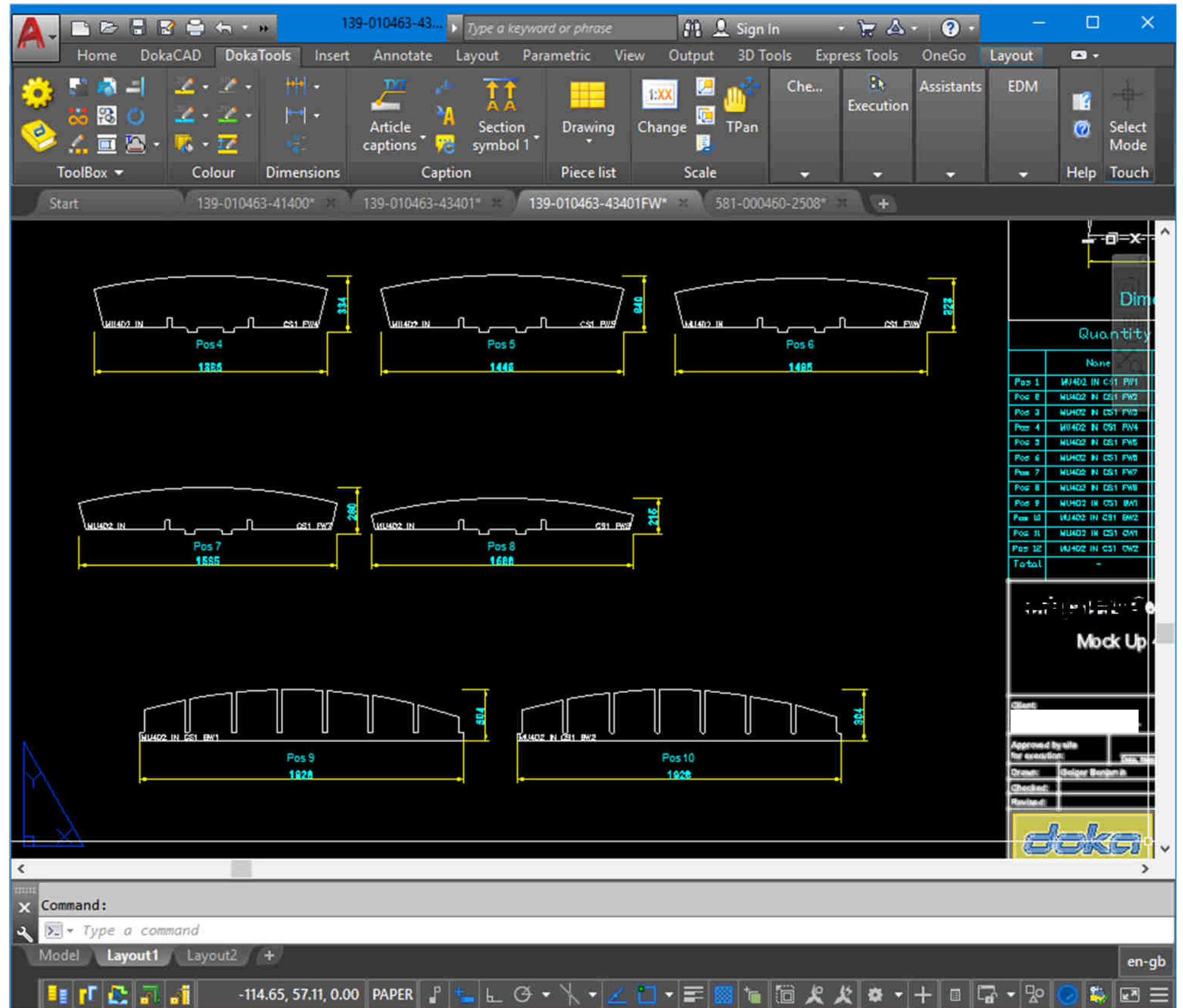
Construction site

- current project in Asia
- from model to formwork
- interlocking
plug connection
- connect instead scale



Construction site

- current project in Asia
- from model to formwork
- Automatic generation of forming woods out of solid planks



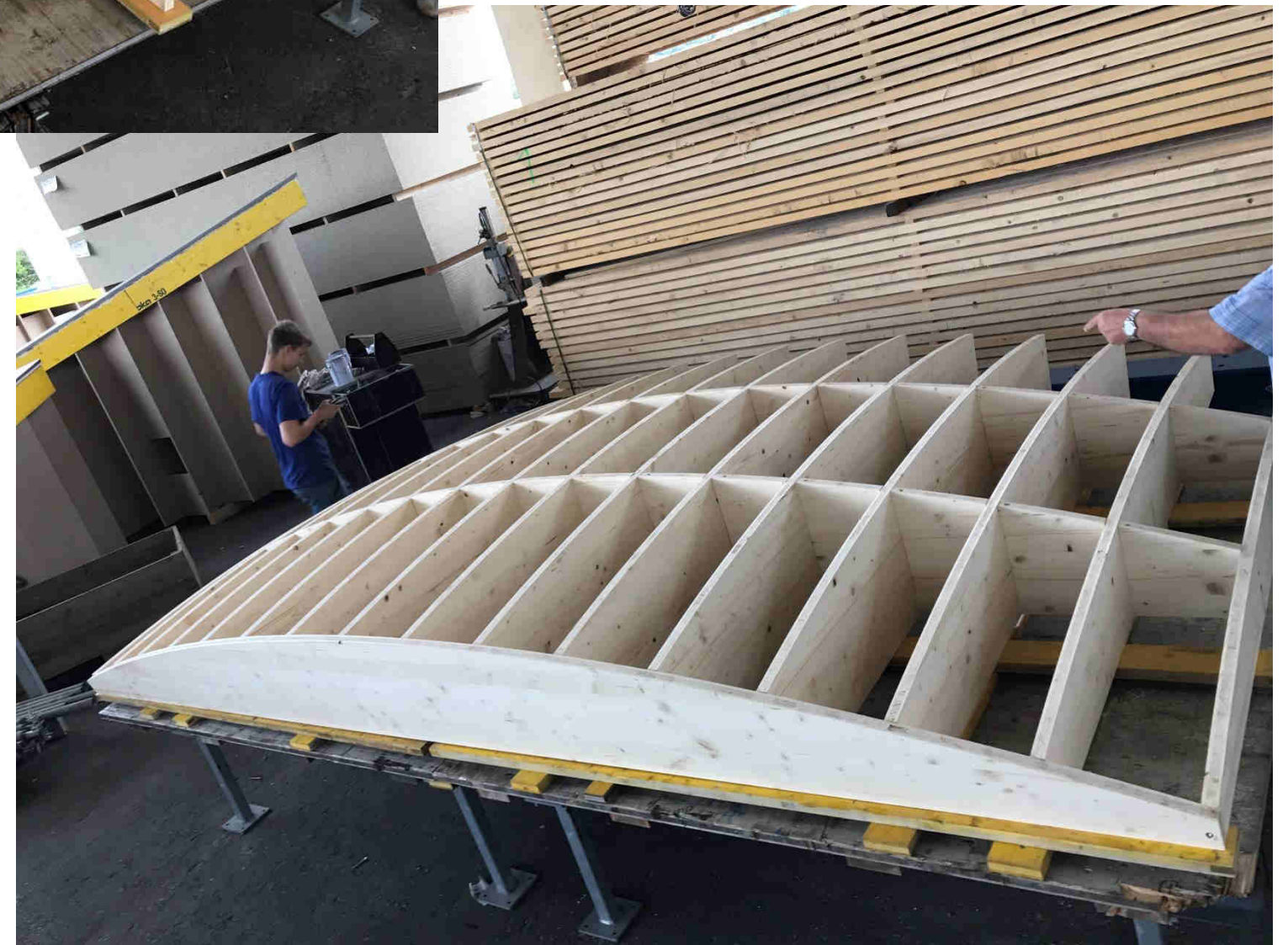
Construction site

- current project in Asia
- from model to formwork
- transfer of geometry to CNC-milling machine



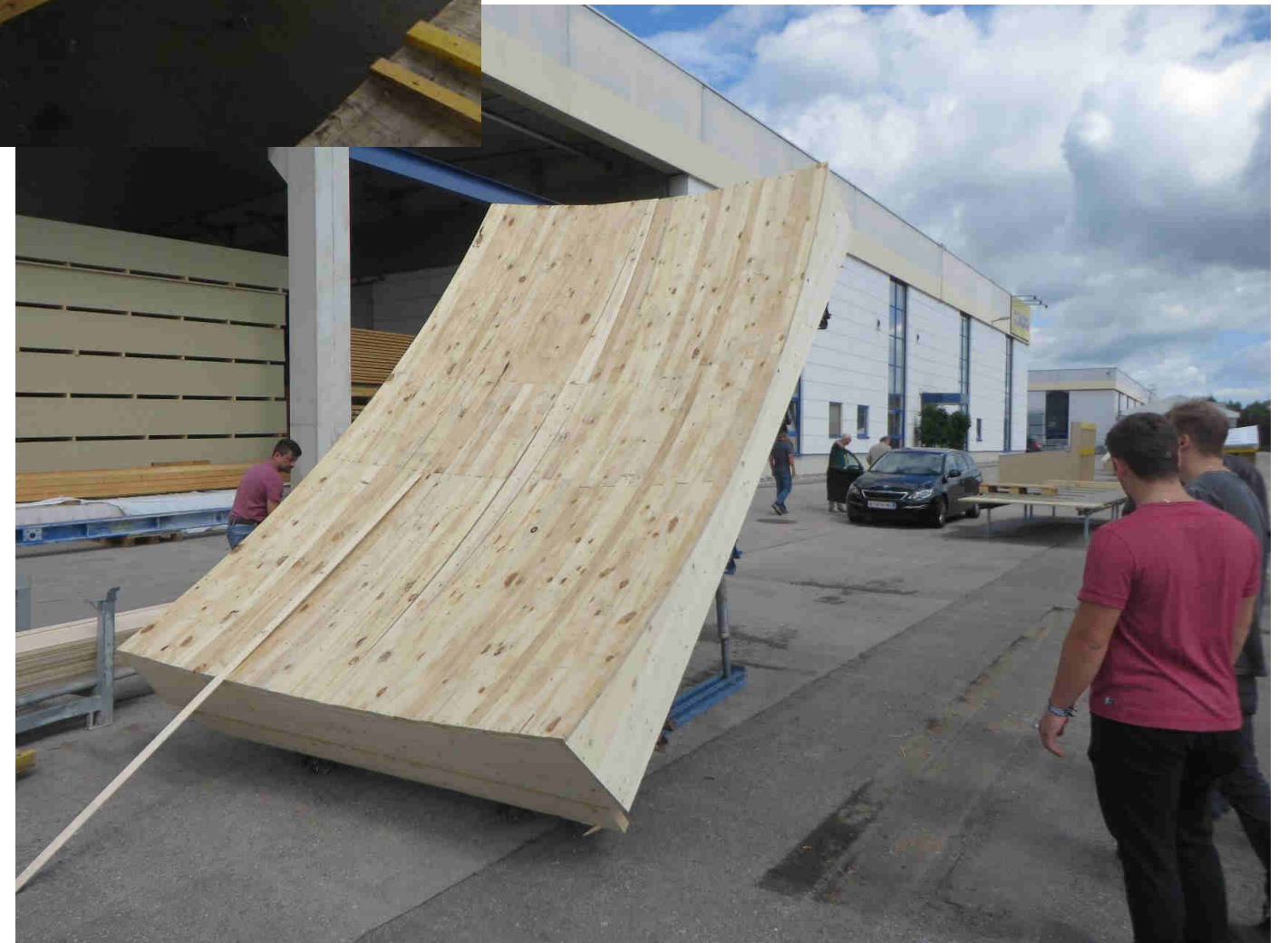
Construction site

- current project in Asia
- from model to formwork
- assembly Mock-up



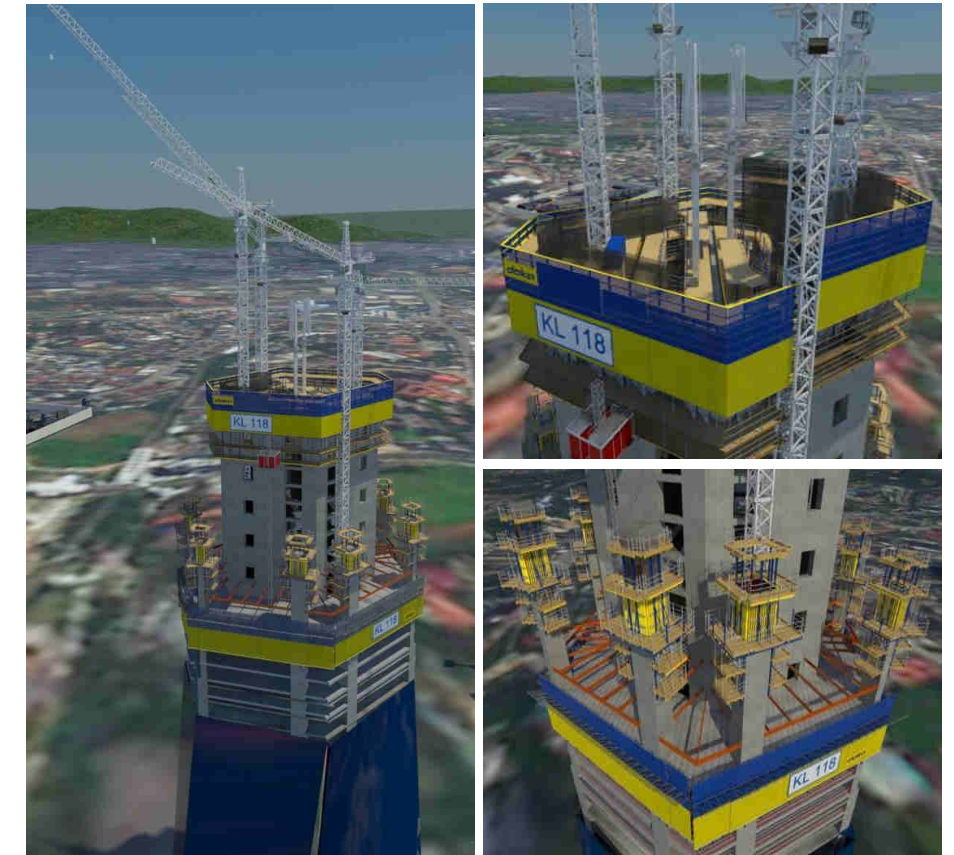
Construction site

- current project in Asia
- from model to formwork
- assembly Mock-up

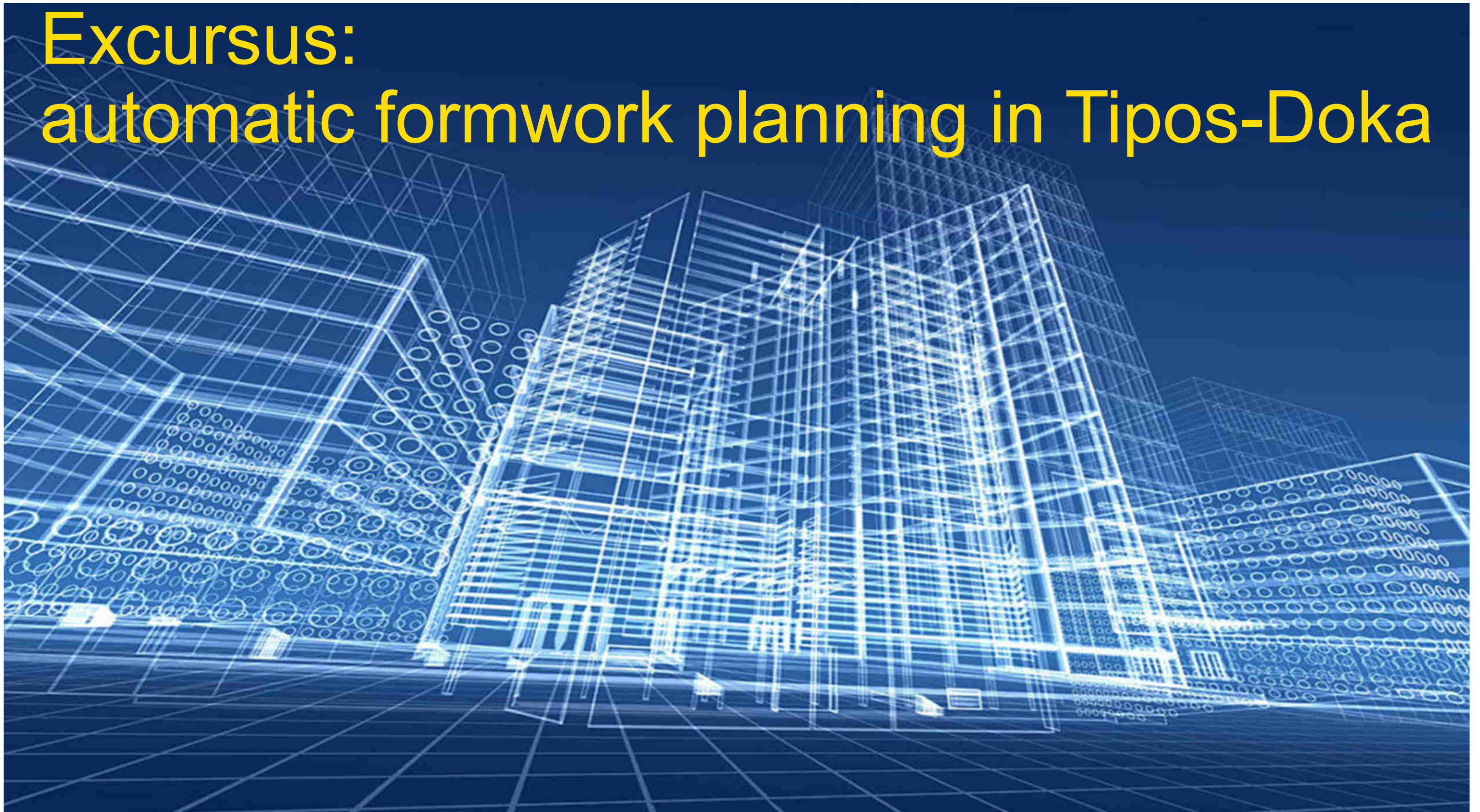


Doka BIM services

- Tipos-Doka and DokaCAD free of charge
- transfer BIM models for formwork planning, support of Autodesk Revit, Tekla Structures, Rhino and IFC
- 3D visualization of complex formwork sequences (on base of renderings)
- miniaturized models in 3D-print
- BIM library for Tekla
- BIM library for Revit



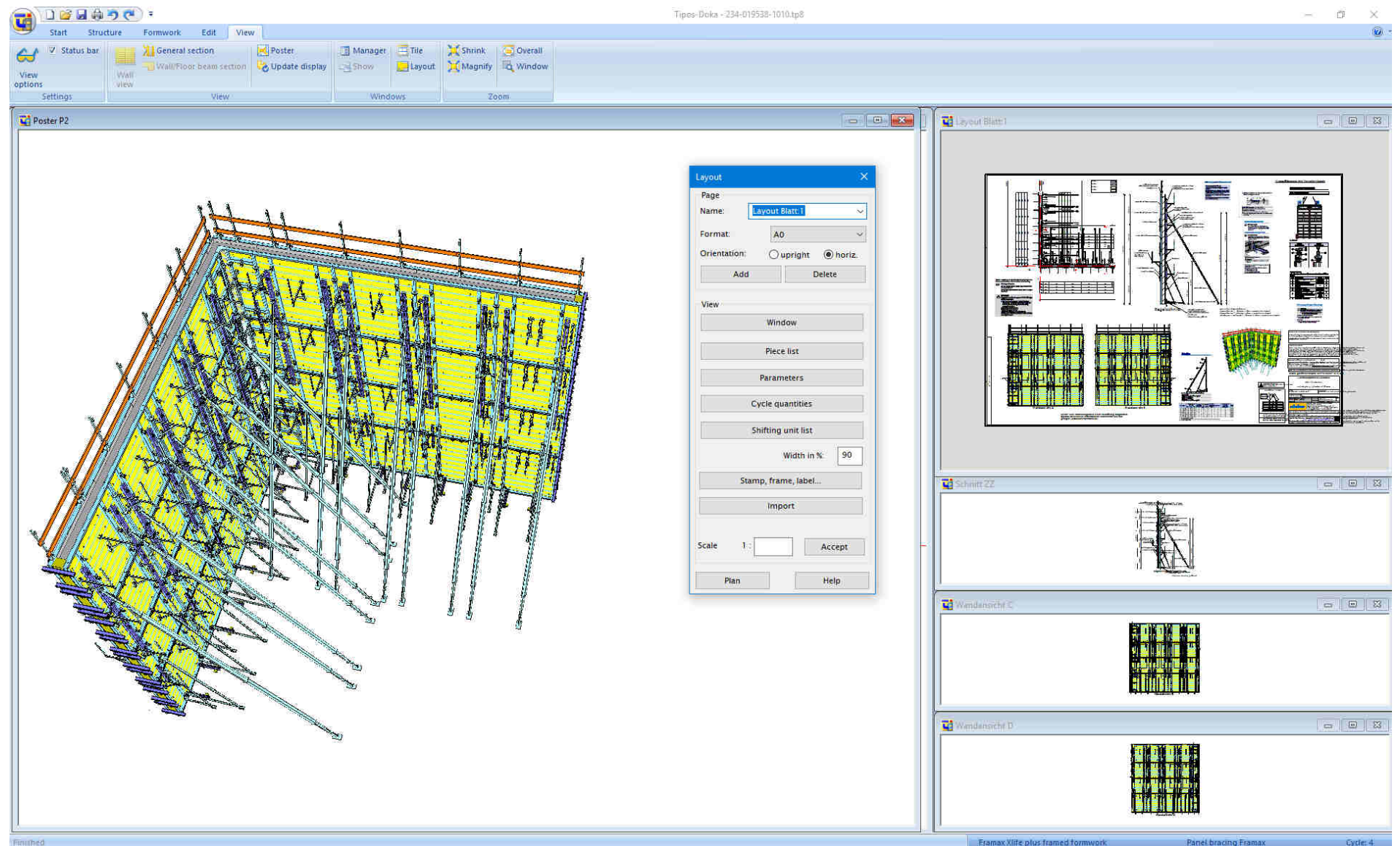
Excursus: automatic formwork planning in Tipos-Doka



Whereto with Business-Logic?

high professional knowledge in Tipos-Doka and DokaCAD

- formwork know-how
- construction rules
- Static
- Logistics
- ...

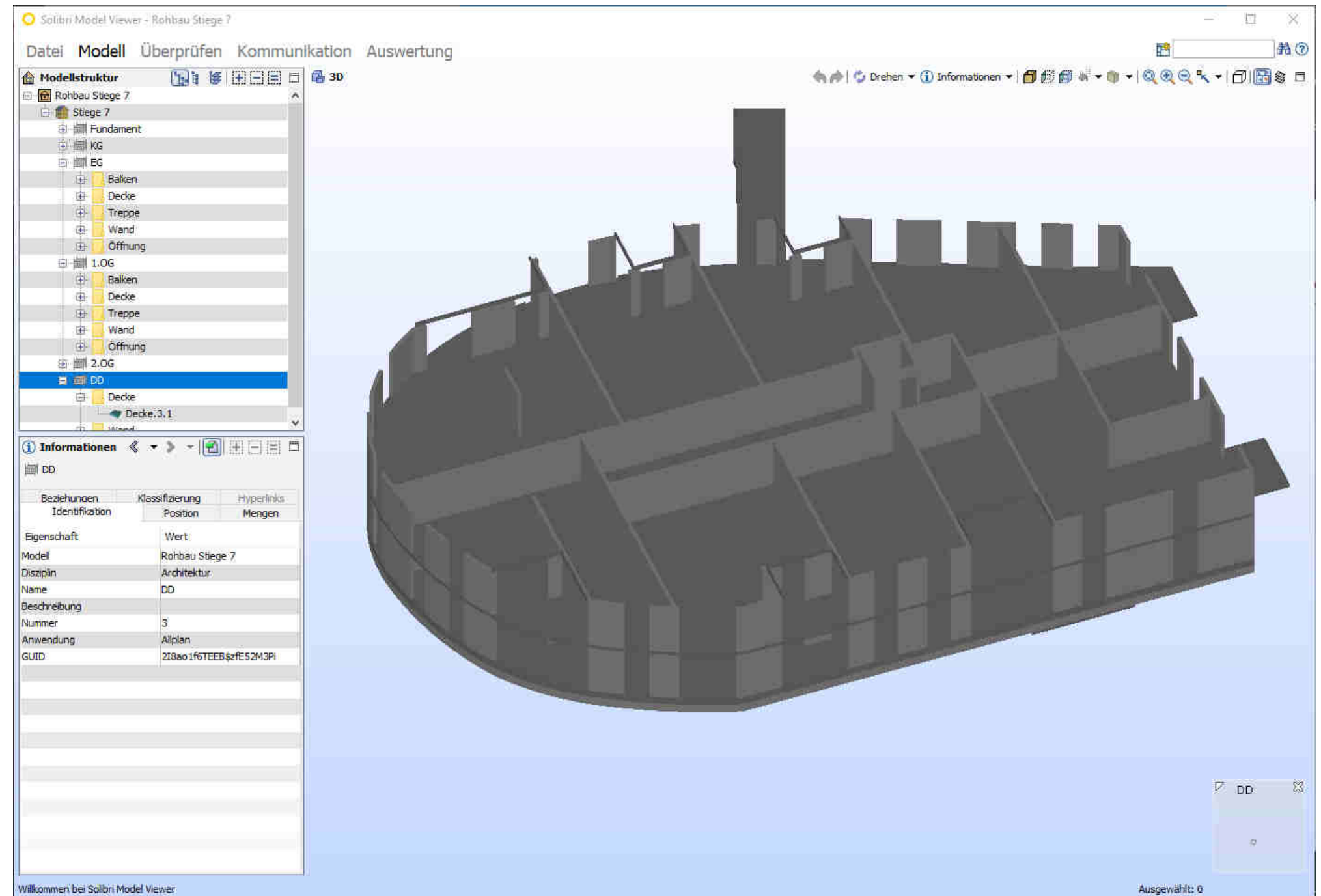


BIM – possible integration / adaption on existing software environment



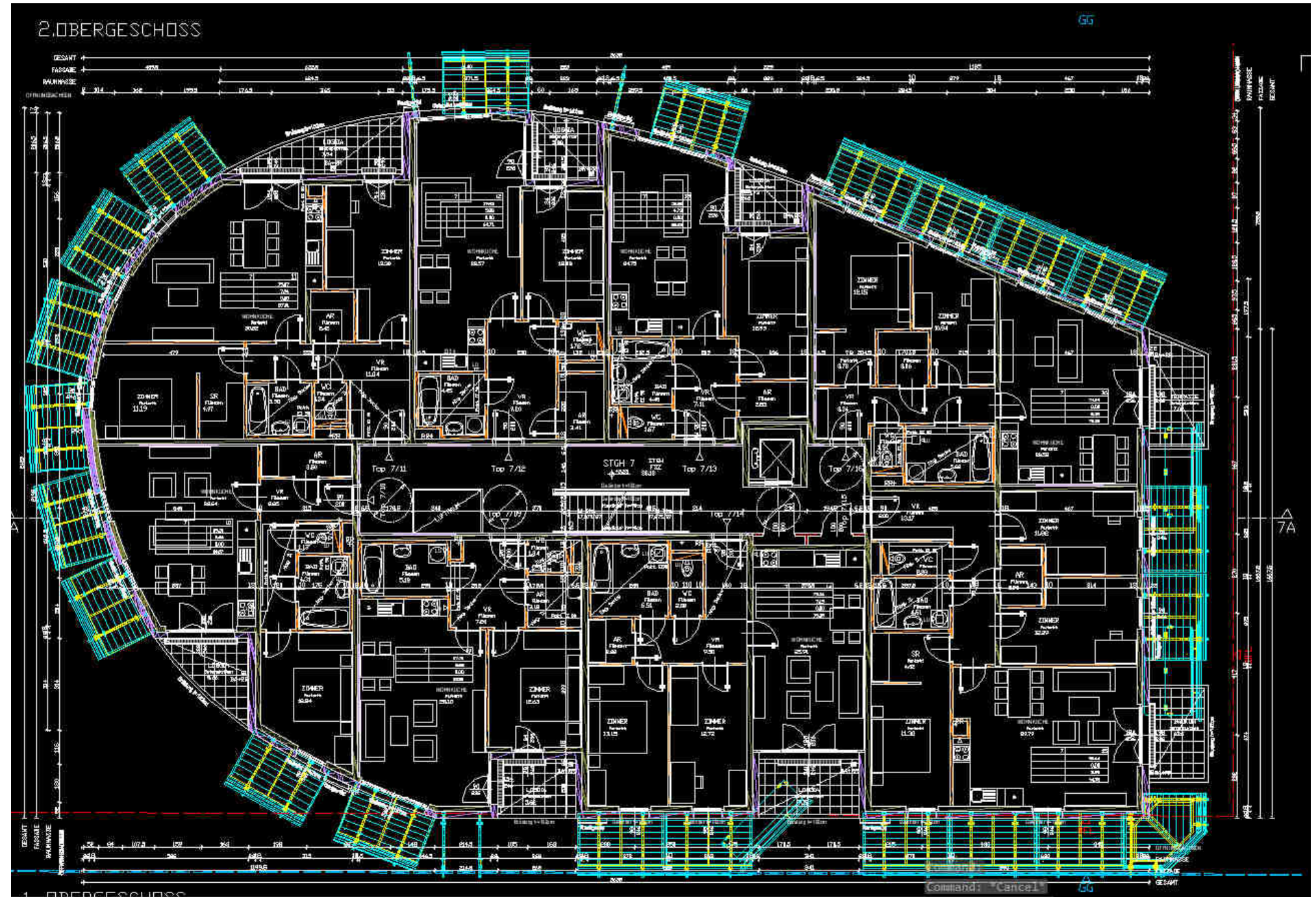
BIM – formwork is geometry

- IFC-model in Solibri Model Viewer

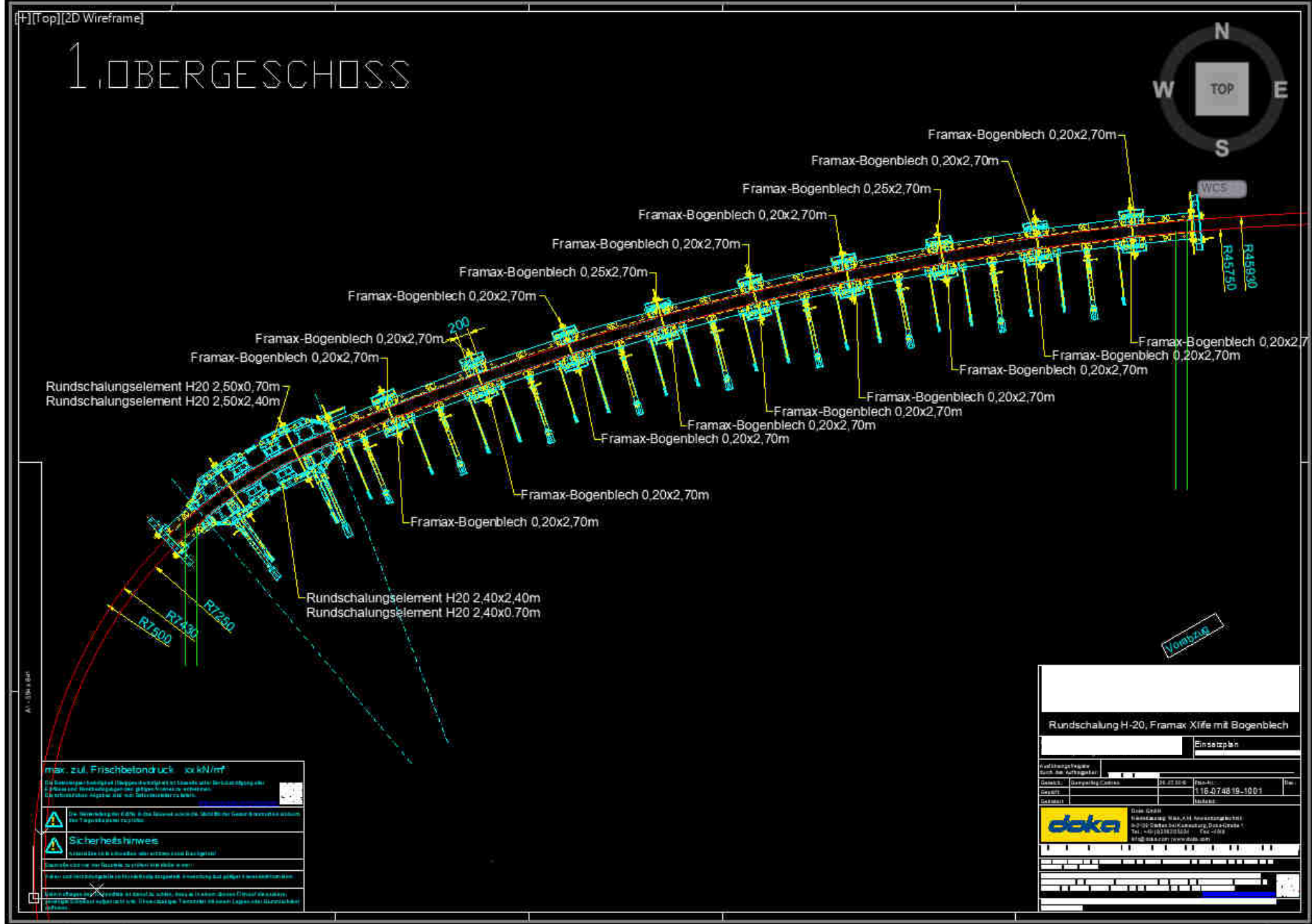


BIM – formwork is geometry

- for initial thoughts often a 2D drawing is enough

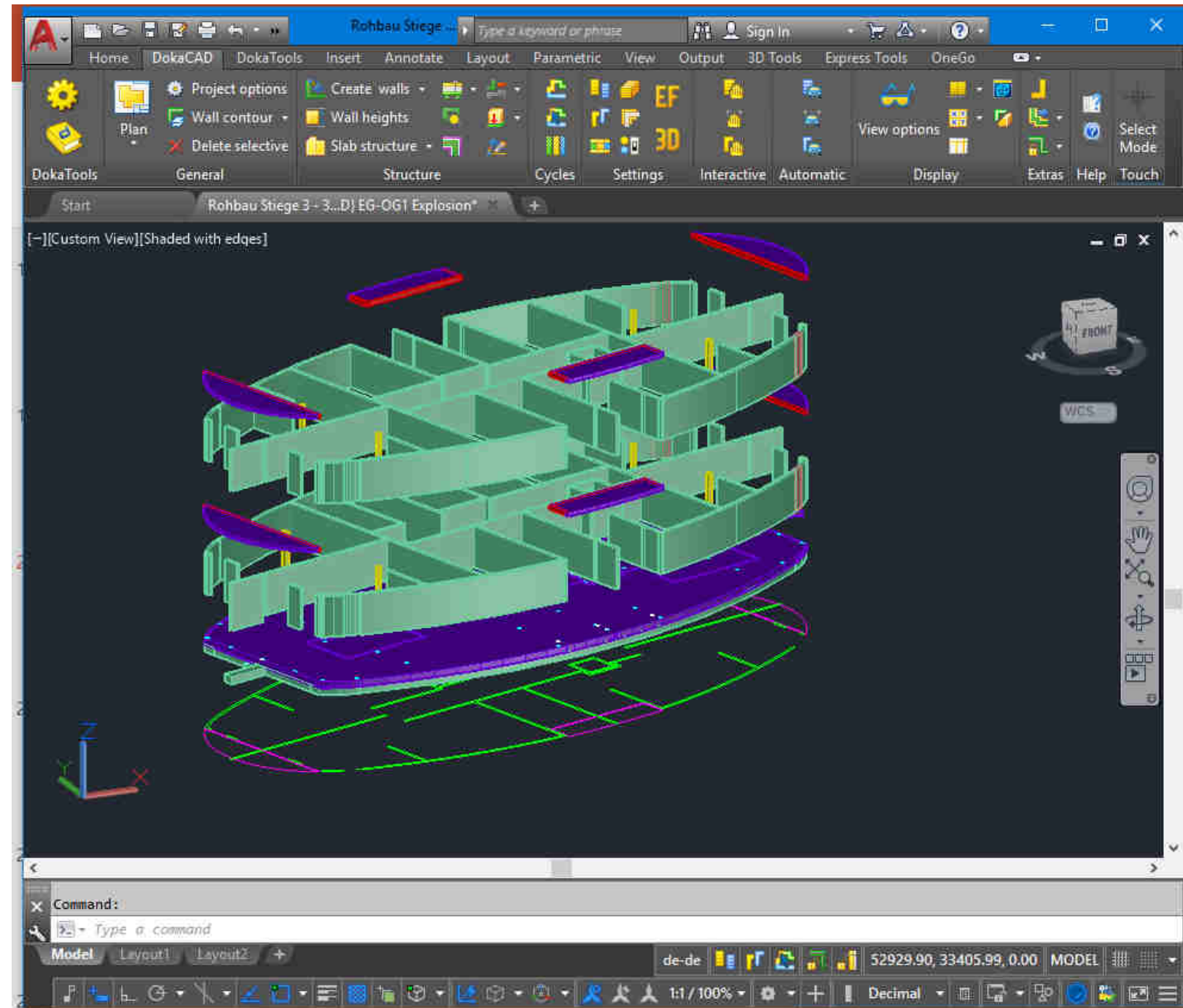


- also for planning a 2D drawing is often enough



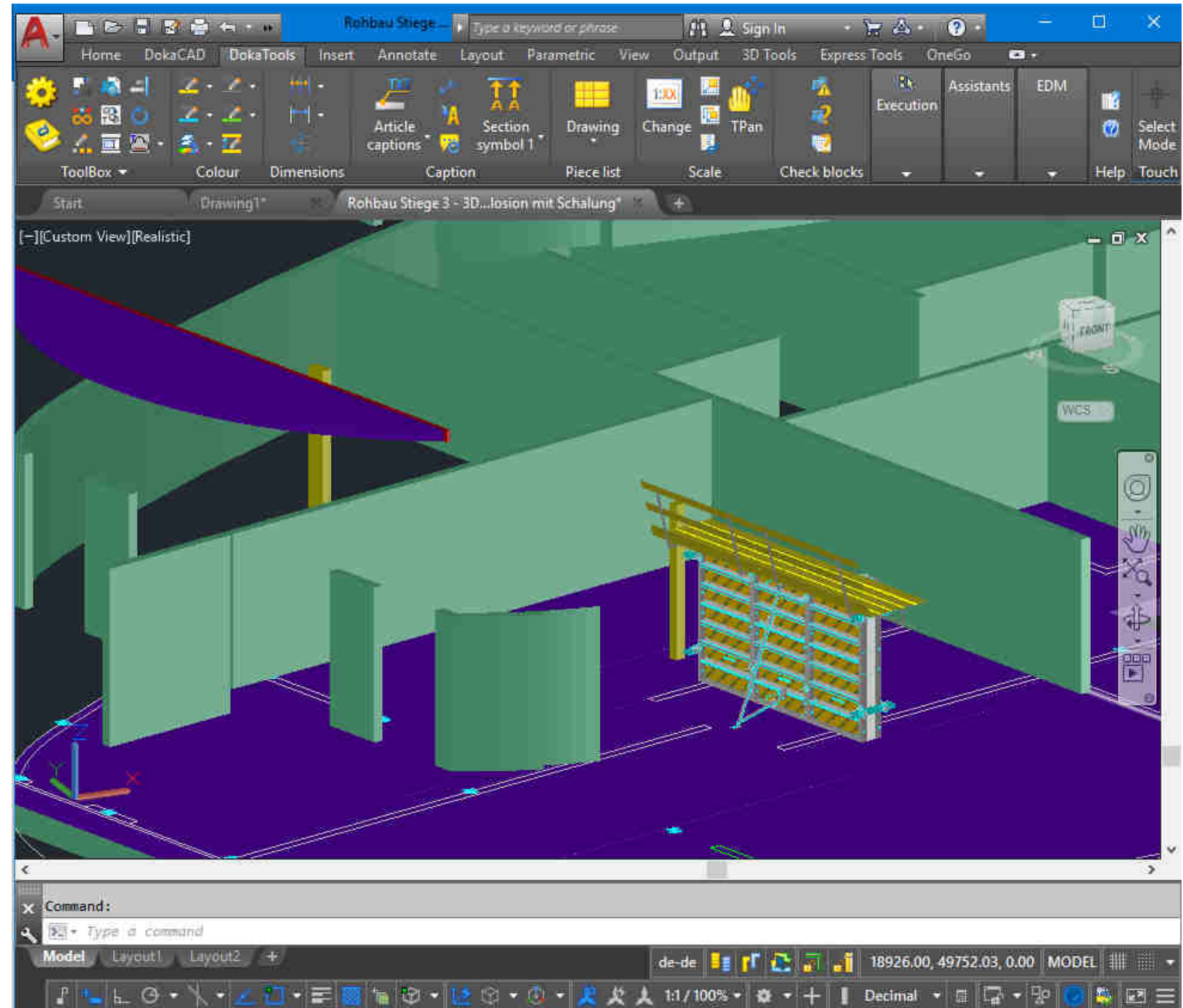
BIM – formwork is geometry – new ways

- import of IFC-model via Revit to AutoCAD
- layout automatically diverted for formwork planning



BIM – formwork is geometry – new ways

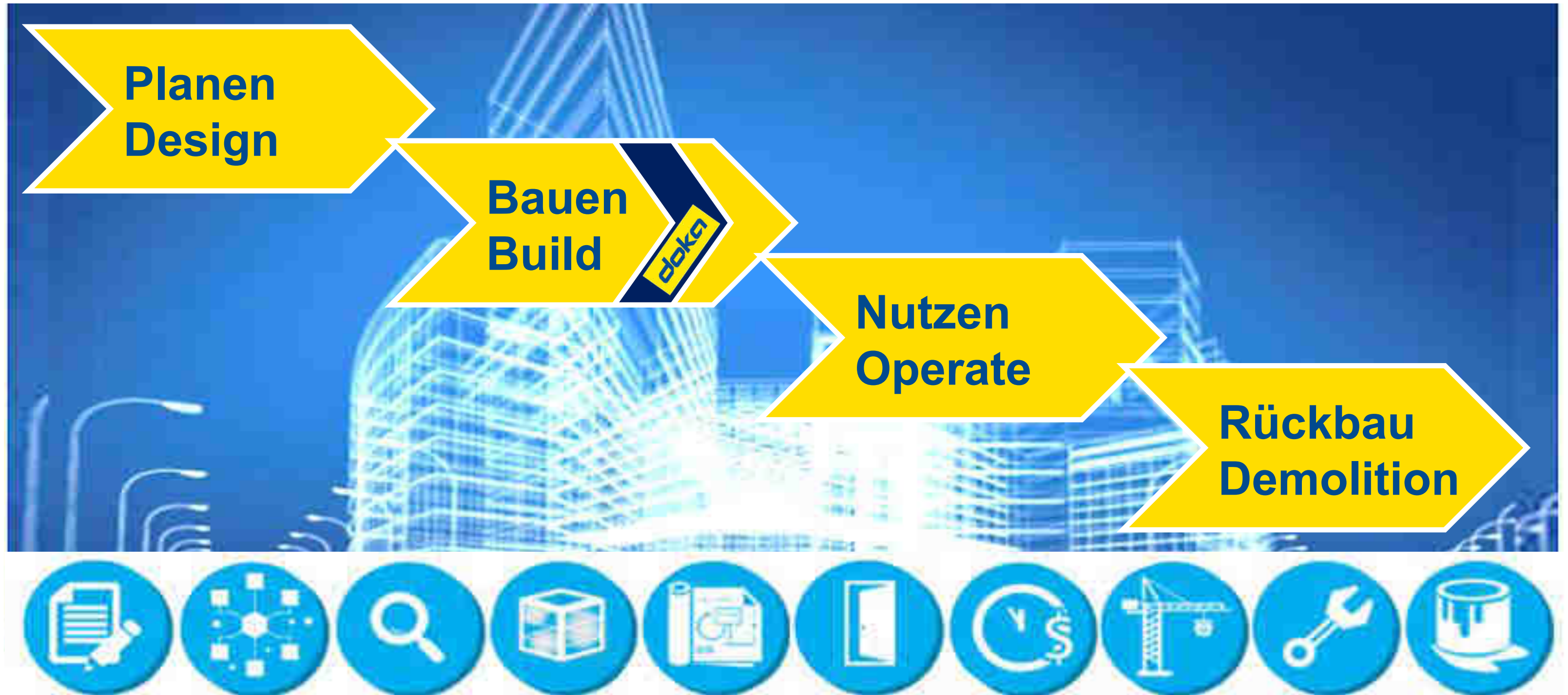
- import of IFC-model via Revit to AutoCAD
- layout automatically diverted for formwork planning
- formwork for walls automatically planned



The major picture ...

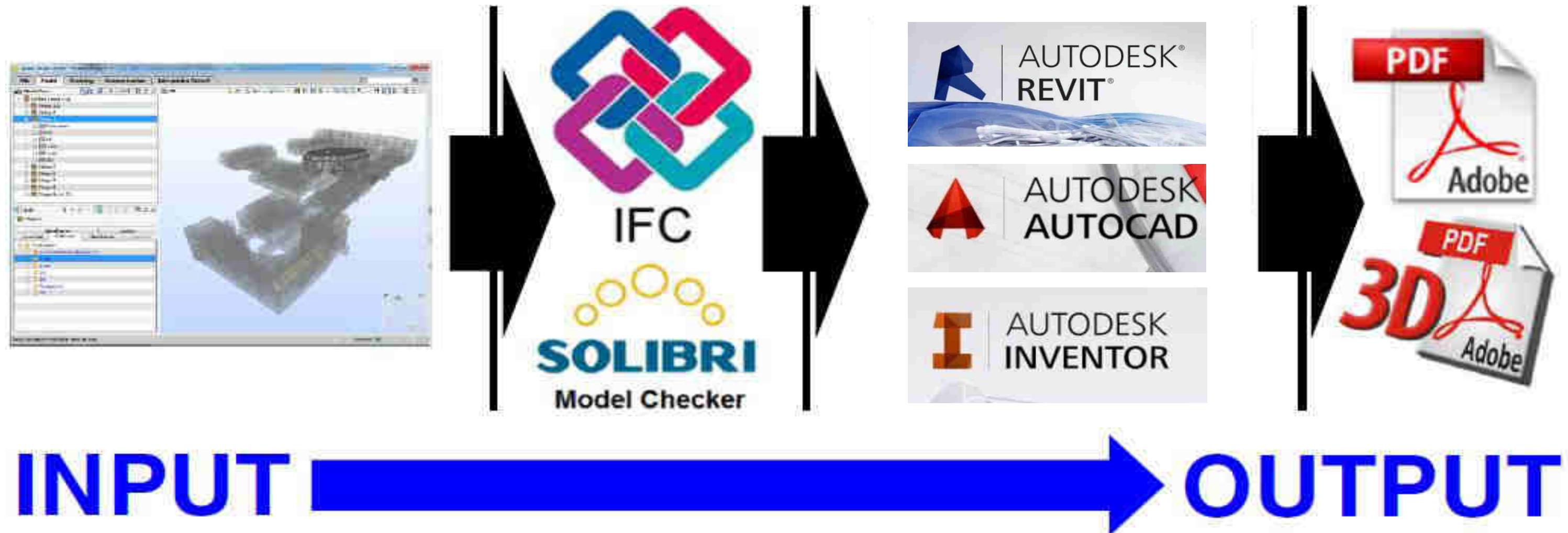


BIM along the lifecycle of a building



BIM current situation at Doka

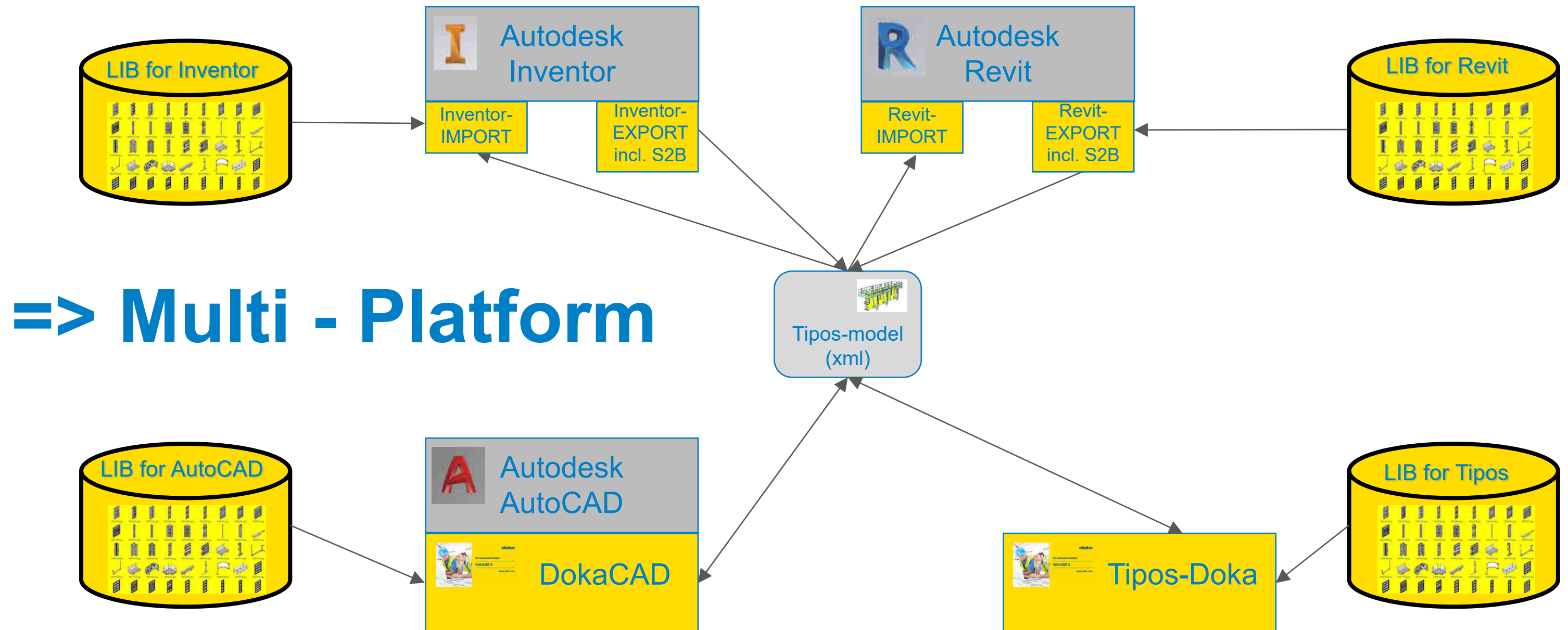
- process between Doka and contractors mainly linear



Excursus: data exchange Tipos-Doka ↔ DokaCAD



Tipos-model import and export in Revit / Inventor / ...



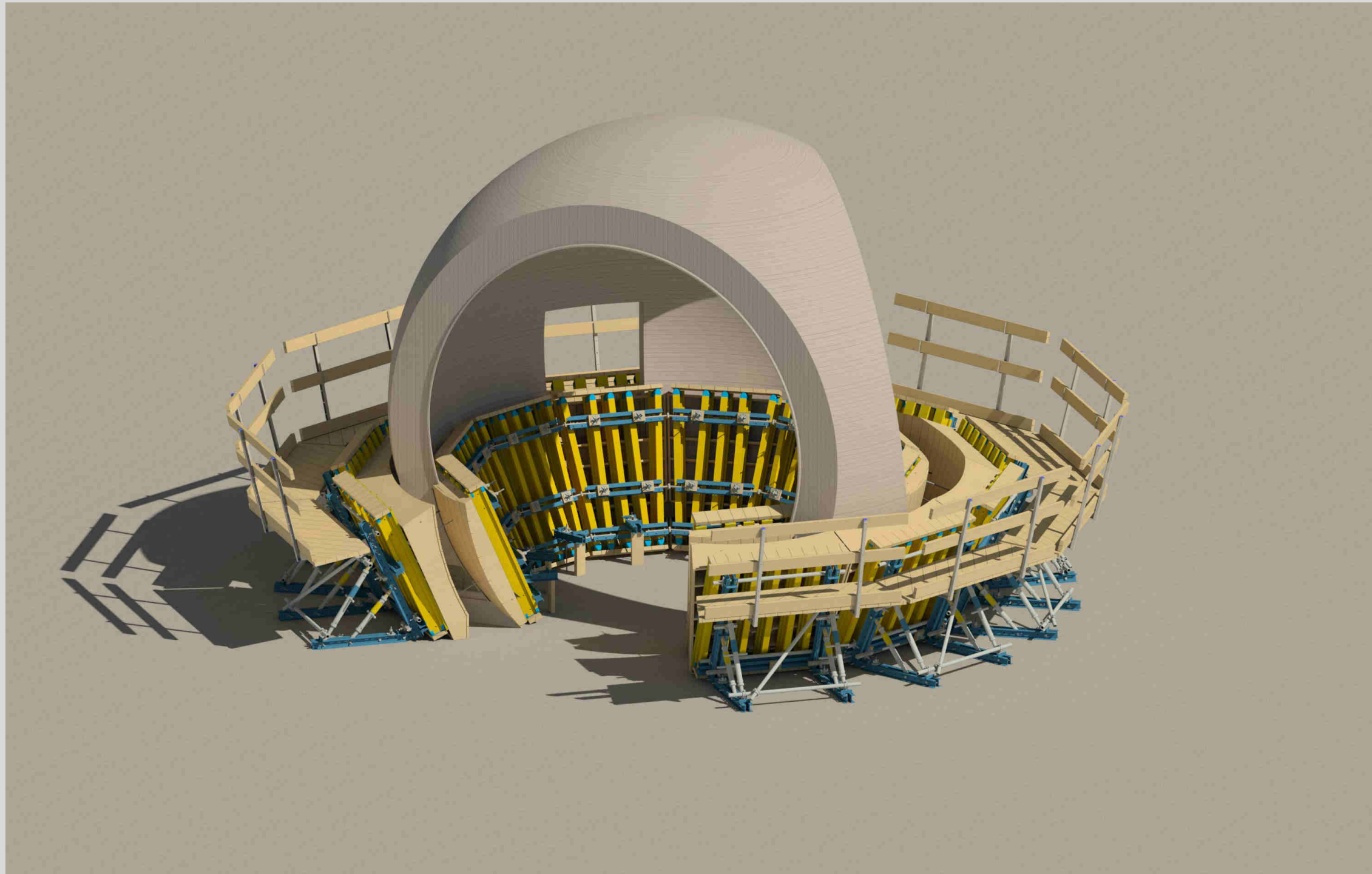
Smooth transition from CAD to BIM



BIM with Doka

Multi – Platform approach

Thanks for your attention!



doka